

Advanced diagnostics for solar and battery systems

Conext™ ComBox

Schneider Electric brings a powerful analytic solution to monitor residential and off-grid solar installation performance, making life simpler for installers and system owners.

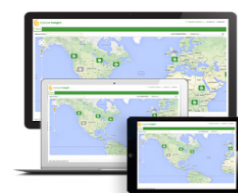


Solution at a glance

Conext ComBox is a true System Manager for your battery based solar installation allowing you to visualize, monitor and control.

- **Cost effective:** monitor solar system performance to ensure optimal returns and uptime.
- **Flexible:** multiple visualization options for trends and analysis as well as custom data logging for diagnostics.
- **Connected:** have your system performance data at your fingertips through emails alerts and portal access.
- **Scalable:** for large multi-cluster systems, the Conext ComBox can be setup in a master-slave configuration to monitor multiple separate Xanbus networks and supported Modbus devices, such as power meters.
- **Simple and powerful:** change or configure the settings of Conext Xanbus devices through the user-interface. Modbus interface on ComBox allows you to link Conext devices with third-party systems for further diagnostic and control.

Conext ComBox easily connects with **Conext Insight** to enable you to remotely monitor a portfolio of sites from any web-connected device.



Conext Insight



Conext ComBox
Tablet App

Homeowners can reap maximum benefits from their battery based solar installation by keeping realtime track of system performance using the **Android Tablet App**.

Conext ComBox can be coupled with **Conext RL** grid-tie inverters to enable zero export in regions where homeowners have no incentives to sell PV energy to the grid.

Technical Specifications

Conext ComBox

Device short name	Conext ComBox
Electrical specifications	
Communication interfaces	
Xanbus	Connector: 2 x RJ45 Products Supported: Conext™ XW+, SW, MPPT 60-150, MPPT 80-600, AGS, SCR, Battery monitor
Ethernet	Connector: 1 x RJ45, 10 / 100 MBPS Server: FTP, Web, Modbus TCP/IP slave, SMTP, SNTP, Auto discovery: DPWS
RS485	Modbus (1 x Connector: Screw 5-terminal, 16-24AWG, 2-wire serial, 19200 bps)
Data Interfaces	
USB 2.0-Host	Connector: USB-A, Protocols: MSD (firmware upgrades and device locator)
USB 2.0-Device	Connector: USB-mini B, Protocols: MSD (data extraction)
Power supply options	
DC input	Certified / Listed / CE, using a 6.5 mm power plug, 9 - 24 Vdc (universal multi-pin AC adapter included)
Power consumption	<2 W typical / 10 W peak
Xanbus	When connected to Conext™ XW+ or MPPT 80 600
RS485 connector	24 Vdc input(safety extra low-voltage only)
Memory	
Internal	96 MB flash
External	Micro-SD Card (2GB or more, class 2 or better recommended)
Conext ComBox Android tablet application*	
Software	Minimum Android version 4.0 (Ice Cream Sandwich), download via Google Play
Hardware	Minimum tablet screen size (7", 1024 x 600, e.g. Acer Iconia Tab A100, Acer Iconia Tab A500, Google Nexus™ 7, Asus Transformer TF700T, Samsung Galaxy Tab*2 10.1)
General specifications	
Weight	0.25 kg (0.55 lb)
Dimensions (H x W x D)	11.4 x 16.9 x 5.4 cm (4.5 x 6.7 x 2.1 in)
Housing/mounting system	ABS Plastic / DIN-rail: 35 mm, Wall-mount: 2-screw
IP rating/mounting Location	IP 20, NEMA 1, Indoor only
Status display	5 x LEDs
Temperature	Operating: -4 to 122 °F (-20 to 50 °C) / storage: -40 to 185 °F (-40 to 85 °C)
Humidity	Operating: < 95%, non-condensing / storage: < 95%
Part number	865-1058
Features	
Programmable dry contact relay	Screw 3-terminal, 16-24 AWG, NC-Com-NO, Form: Class 2, 24 Vdc 4 A max
Graphical user interface	Internet Browser, Android tablet app
Remote firmware upgrades	Yes (ComBox and connected Xanbus devices)
Custom datalogger	Yes (requires Micro-SD card)
Warranty	5 years
Number of Xanbus devices	Up to 20 (depending on device type)
Regulatory approvals	
Marking	CE, RCM
EMC immunity	EN61000-6-1 residential / commercial
EMC emission	EN61000-6-3, FCC Part 15 Class B, Ind. Canada ICES-003 Class B
Substances/environmental	RoHS

Specifications are subject to change without notice. *Tablet not included

Conext ComBox communication device works with the following Schneider Electric products



Conext XW inverter/charger

XW 5548 NA Product no. 865-5548-01
XW 6848 NA Product no. 865-6848-01
XW 7048 E Product no. 865-7048-61
XW 8548 E Product no. 865-8548-61



Conext SW inverter/charger

SW 2524 120 Product no. 865-2024
SW 4024 120 Product no. 865-3524
SW 2524 230 Product no. 865-2524-61
SW 4024 230 Product no. 865-4024-61



Conext MPPT 60 150
solar charge controller
Product no. 865-1030-1



Conext MPPT 80 600
solar charge controller
Product no. 865-1032



System Control Panel (SCP)
Product no. 865-1050-01



Automatic Generator Start (AGS)
Product no. 865-1060-01



Conext Battery Monitor
Product no. 865-1080-01



Conext RL 3000/4000/5000 E/ E-S
3000 Product no. PVSNVC3000/3000S
4000 Product no. PVSNVC4000/4000S
5000 Product no. PVSNVC5000/5000S



Conext Insight